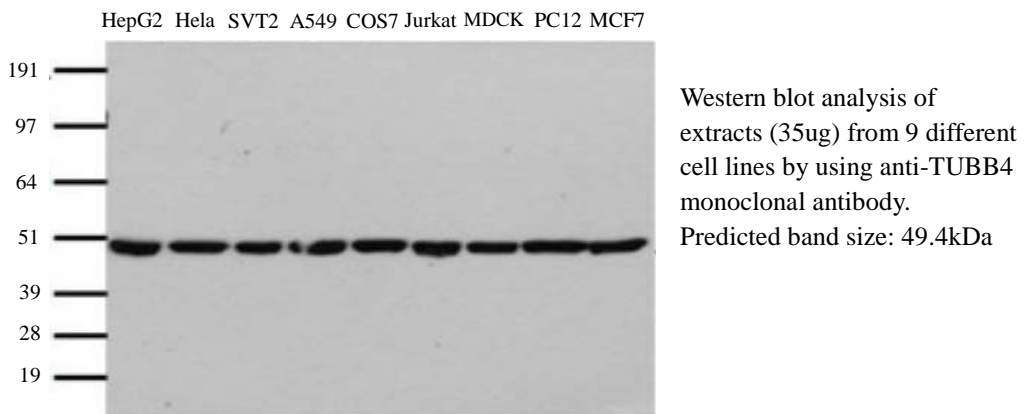


TA-10 Mouse Anti- β Tubulin (TUBB4) mAb

Clone	OTI5C1
Isotype	IgG2b
Amount	0.1 ml
Target name	TUBB4A, beta-5, DYT4, TUBB4
Immunogen	Human beta tubulin class IVa protein produced in HEK293T cells
Species reactivity	Human, mouse, rat, monkey, dog
Application	WB
Suggested dilutions	1:1000-1:2000
Buffer	PBS (pH7.3) containing 1% BSA, 50% glycerol and 0.02% sodium azide
Purification	Purified from mouse ascites fluids by affinity chromatography
Storage/Stability	Shipped at -20°C or with ice packs. Upon delivery store at -20°C. Dilute in PBS (pH7.3) if necessary. Stable for 12 months from date of receipt. Avoid repeated freeze-thaws.
Function	Beta tubulins are one of two core protein families (alpha and beta tubulins) that heterodimerize and assemble to form microtubules.

Experimental data



Notes: This product is to be used for laboratory only. Not for diagnostic use.

