

## Product datasheet for TA347050

### BRG1 (SMARCA4) Mouse Monoclonal Antibody [Clone ID: 6D7-F7-B6]

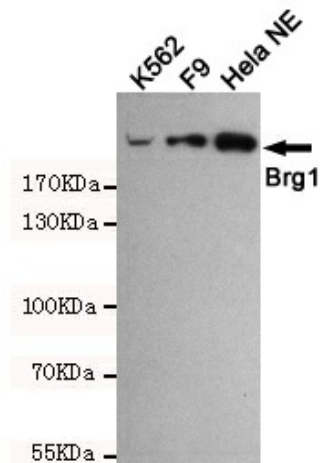
#### Product data:

|                         |   |
|-------------------------|---|
| Product Type:           | Primary Antibodies  |
| Clone Name:             | 6D7-F7-B6   |
| Applications:           | IF, IP, WB  |
| Recommend Dilution:     | WB: 1:1000, IF: 1:50  |
| Reactivity:             | Human, Mouse  |
| Host:                   | Mouse   |
| Isotype:                | IgG1  |
| Clonality:              | Monoclonal  |
| Immunogen:              | The immunogen for SMARCA4 antibody: purified recombinant human BRG1 protein fragments expressed in E.coli.  |
| Formulation:            | Purified mouse monoclonal antibody in PBS(pH 7.4) containing with 0.02% sodium azide and 50% glycerol.  |
| Purification:           | Affinity purified   |
| Predicted Protein Size: | 220 kDa   |
| Gene Name:              | SWI/SNF related, matrix associated, actin dependent regulator of chromatin, subfamily a, member 4   |
| Database Link:          | <a href="#">NP_001122316</a> <a href="#">Entrez Gene 20586</a> <a href="#">MouseEntrez Gene 6597</a> <a href="#">Human</a>  |
| Background:             | The protein encoded by this gene is a member of the SWI/SNF family of proteins and is similar to the brahma protein of Drosophila. Members of this family have helicase and ATPase activities and are thought to regulate transcription of certain genes by altering the chromatin structure around those genes. The encoded protein is part of the large ATP-dependent chromatin remodeling complex SNF/SWI, which is required for transcriptional activation of genes normally repressed by chromatin. In addition, this protein can bind BRCA1, as well as regulate the expression of the tumorigenic protein CD44. Mutations in this gene cause rhabdoid tumor predisposition syndrome type 2. Multiple transcript variants encoding different isoforms have been found for this gene. [provided by RefSeq, May 2012] |
| Synonyms:               | BAF190; BAF190A; BRG1; CSS4; hSNF2b; MRD16; RTPS2; SNF2; SNF2L4; SNF2LB; SWI2   |
| Protein Families:       | Druggable Genome, Transcription Factors   |

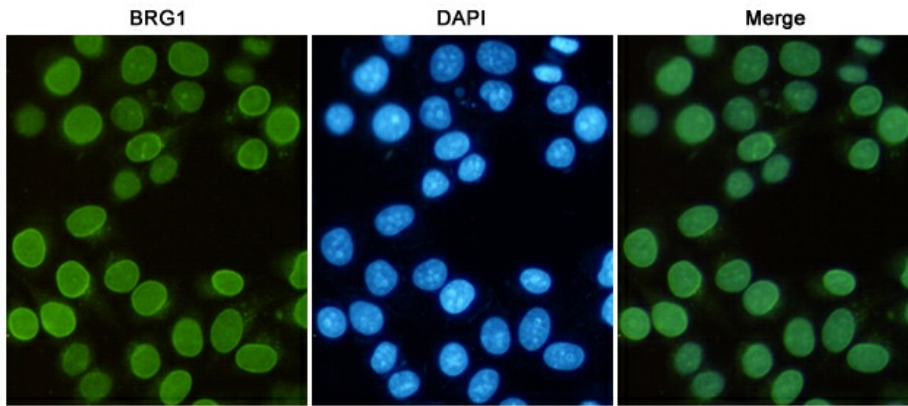


[View online »](#)

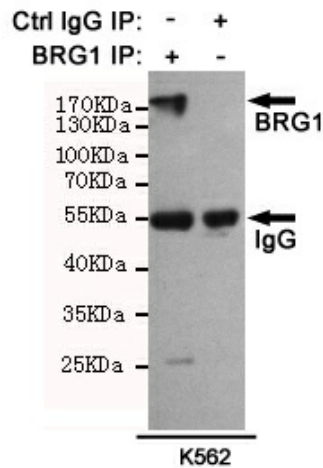
Product images:



Western blot detection of BRG1 in HeLa NE, F9 and K562 cell lysates using BRG1 mouse mAb (1:1000 diluted). Predicted band size: 220KDa. Observed band size: 220KDa.



Immunofluorescent analysis of HeLa cells fixed with 4% Paraformaldehyde and using anti-BRG1 mouse mAb (dilution 1:50). DAPI was used to stain nucleus (blue).



Immunoprecipitation analysis of K562 cell lysates using BRG1 mouse mAb (201025).